



www.auvitran.com

Table of contents

1. Legacy.....	3
1.1 LIMITATION OF LIABILITY	3
1.2 TRADEMARKS	3
1.3 COPYRIGHT.....	3
1.4 MORE INFORMATION.....	3
2 AV-WALL-DT4oB Quick Start.....	4
2.1 Power to Start-up.....	4
2.2 Connect the AV-WALL-DT4oB to an IP/Dante network.....	4
2.3 AV-WALL-DT4oB Dante settings	5
2.4 Access to AV-WALL-DT4oB User Interface via AVSMonitor on Windows OS	6
3 AV-WALL-DT4oB setting via rotative push-button functions	7
3.1 Control mode.....	7
3.1.1 Change the gain.....	8
3.1.2 Change the source.....	8
3.1.2.1 Unavailable devices handling & Dante remote control.	9
3.1.3 Bluetooth Control	10
3.1.3.1 Bluetooth device search & pairing.....	11
3.1.3.2 Bluetooth Unpair	11
3.1.3.3 Play / Pause Bluetooth Audio Stream.....	11
3.2 Configuration mode.....	12
3.2.1 Screen brightness.....	12
3.2.2 LEDs brightness.....	12
4 AV-WALL-DT4oB control using AVS-Monitor.....	13
4.1 “Out” Interface	13
4.2 “Bluetooth” Menu.....	14
4.3 “General” menu.....	15
4.4 “Properties” menu.....	15
4.5 “GUI” menu	16

1. Legacy

1.1 LIMITATION OF LIABILITY

In no case and in no way, the provider of this software (AuviTran, the distributor or reseller, or any other party acting as provider) shall be liable and sued to court for damage, either direct or indirect, caused to the user of the software and which would result from an improper installation or misuse of the software. "Misuse" and "improper installation" mean installation and use not corresponding to the instructions of this manual.

AuviTran is constantly working on the improvement of the products. For that purpose, the products functionalities are bound to change and be upgraded without notice. Please read carefully the User's manual as the new functionalities will be described therein.

1.2 TRADEMARKS

All trademarks listed in this manual are the exclusive property of their respective owners. They are respected "as is" by AuviTran. Any use of these trademarks must receive prior approval of their respective owners. For any question, please contact the trademark's owner directly.

1.3 COPYRIGHT

The information in this manual is protected by copyright. Therefore, reproduction, distribution of whole or part of this manual is strictly forbidden without the prior written agreement of AuviTran.

1.4 MORE INFORMATION

Please visit our website for any question of further inquiry concerning our product range. Updates will also be posted when available.

<http://www.auvitran.com>

2 AV-WALL-DT4oB Quick Start

2.1 Power to Start-up

To start your AV-WALL-DT4oB, connect the RJ45 port to an active POE device using a CAT5E/6 cable (100Mb/s connection).



When powered, the 6 White led lights on the AV-WALL-DT4oB front face will flash and then the lights will flash alternatively until the device is switched on.

2.2 Connect the AV-WALL-DT4oB to an IP/Dante network

The connection of your AV-WALL-DT4oB to the IP/Dante network is done via the same Ethernet CAT5e/6/7 cable used for the power supply.

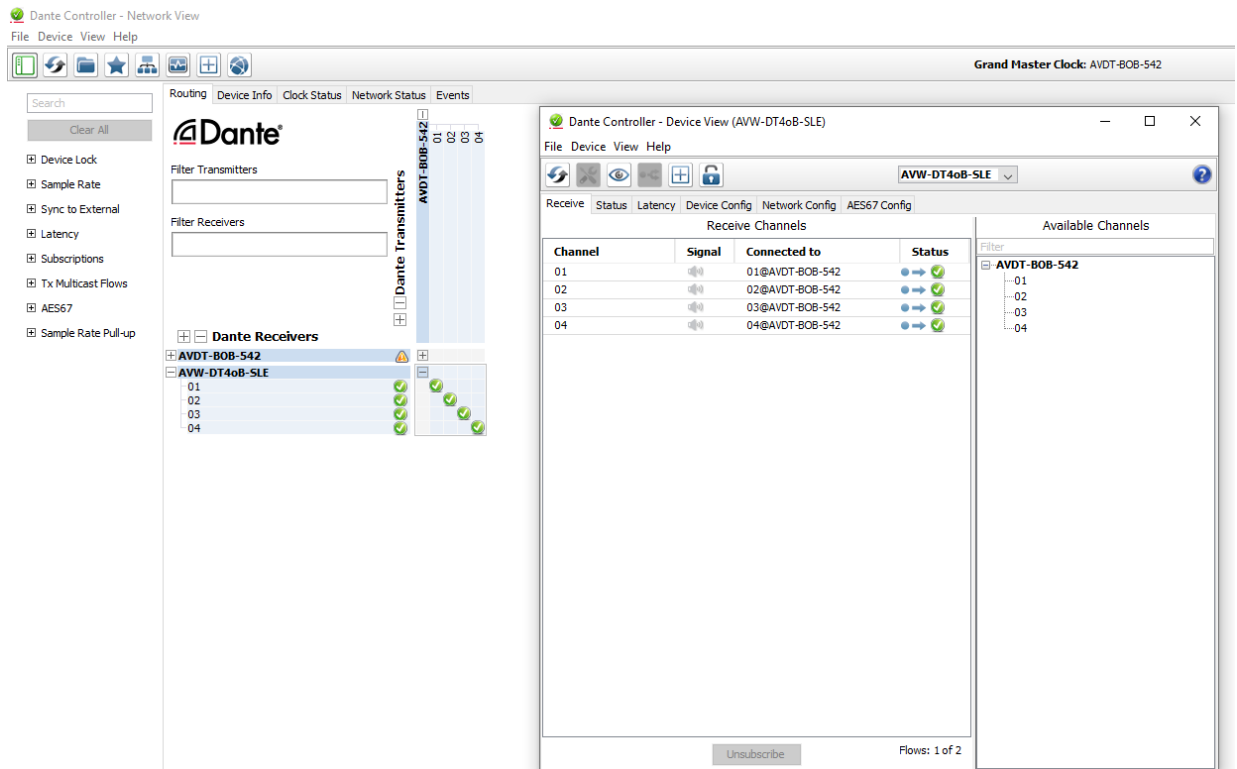
AV-WALL-DT4oB has a unique IP network addresses and a unique name to control Dante and AV-WALL-DT4oB settings:

1. The IP address is preset by default at factory to be set automatically using a DHCP server or using APIPA address (169.254.xxx.xxx/16) if no DHCP server is detected by the device. The IP address can be fixed using the Dante controller
2. The AV-WALL-DT4oB name is preset at factory at "**AV-WALL-DT4o#**" where # is its serial number. The Dante name of an AV-WALL-DT4oB can be changed by the Dante Controller.
 - ⇒ AV-WALL-DT4oB serial number 145 has Dante name "**AV-WALL-DT4o-145**" as factory preset
3. The AV-WALL-DT4oB setting can be done locally via the front face rotative button of the AV-WALL-DT4oB or via AVSMonitor (Software downloadable on www.auditran.com)

2.3 AV-WALL-DT4oB Dante settings

The AV-WALL-DT4oB Dante settings are done via the standard Audinate Dante Controller.

1. Download Dante Controller on the Audinate web site at the following web address <https://www.audinate.com/products/software/dante-controller>
2. Install Dante Controller by double clicking on the download file.
3. Start Dante Controller to detect your AV-WALL-DT4oB Dante devices and control settings

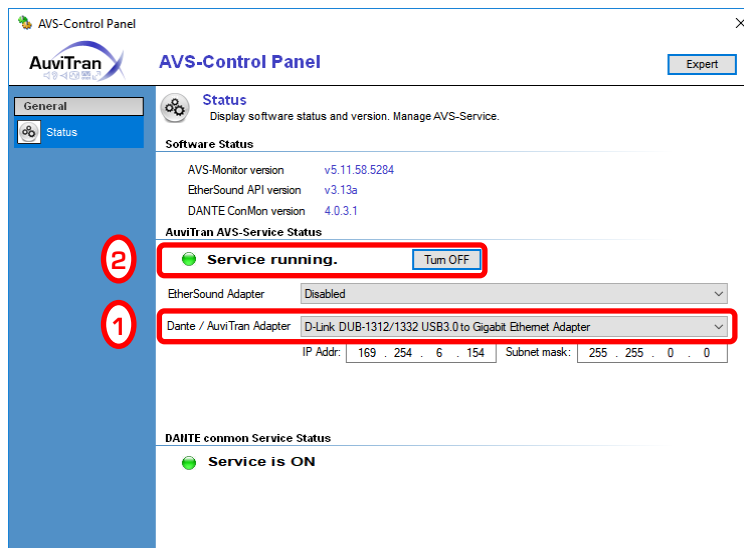


4. To change AV-WALL-DT4oB name, Double click on the device label
5. Select "**Device Config**" tab in the new windows and modify the "**Rename Device**" field

2.4 Access to AV-WALL-DT4oB User Interface via AVSMonitor on Windows OS

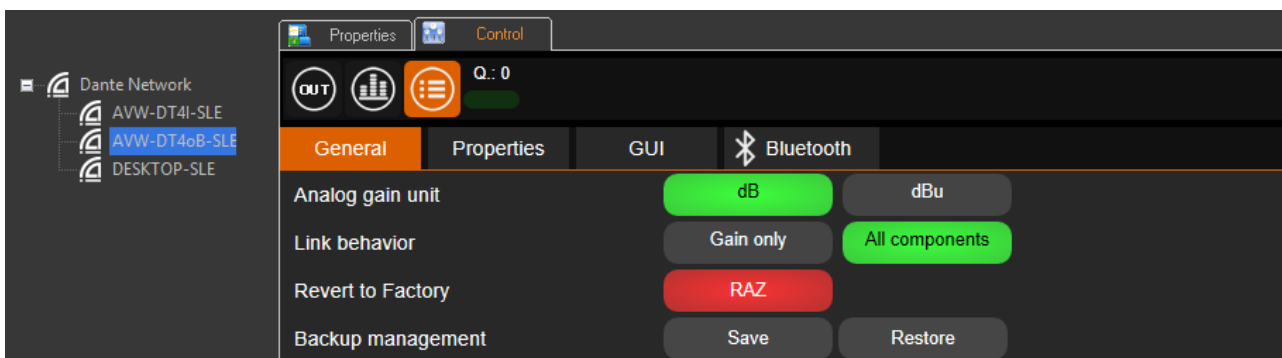
The AV-WALL-DT4oB User Interface can be accessed using AVSMonitor on Windows OS:

1. Download Auvitrans AVS-Monitor free software for windows 7/8/10 available at the following web address <https://www.auvitran.com/software>
2. Install AVS-Monitor by double clicking on the download file.
3. Using AVS-Control Panel
 - 3.1. Select the NIC card that must be used by Dante /Auvitrans Adapter
 - 3.2. Run the service



4. Start AVS-Monitor

- 4.1. The AV-WALL-DT4oB connected to the network will automatically appears in the “Dante Network”
- 4.2. Select the AV-WALL-DT4oB in the left list called “Dante network” and” “Control” Tab in the right windows as describe bellow



4.3. See chapter 4 for interface description

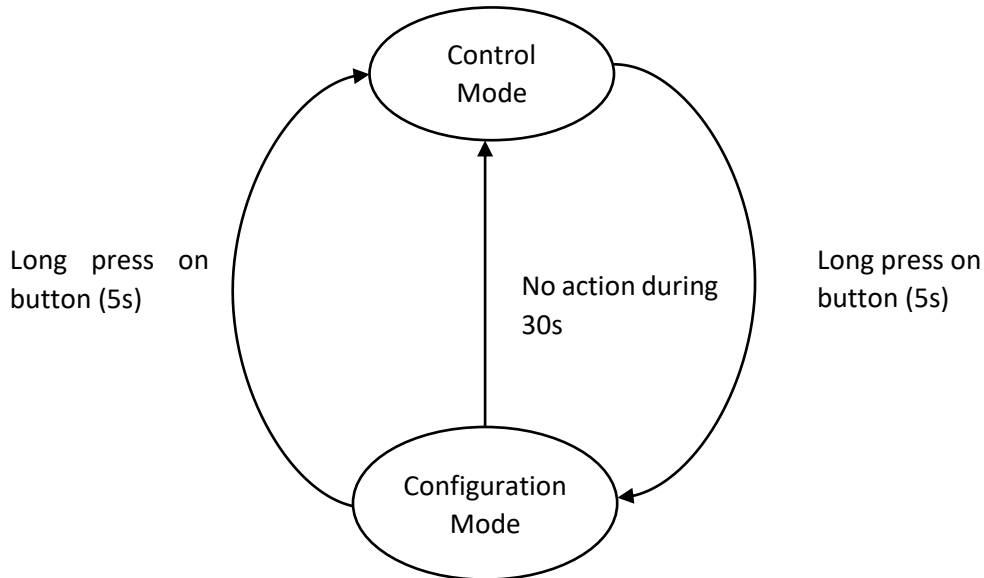
Notice:

- If your device doesn't appear, your network configuration is probably not good. Return to AVS-Control-Panel using “Edit/Control panel” menu and reselect another network or check if your PC is in the same network that the AV-WALL-DT4oB

3 AV-WALL-DT4oB setting via rotative push-button functions

The AV-WALL-DT4oB DT4oB has 2 modes of operation sequences:

- The "Control" mode
- The "Configuration" mode



3.1 Control mode

The Control mode is activated by pressing the push-button briefly. The parameter we are acting on is flashing. Another brief press will pass to the next parameter and the next LED will flash.

The Control mode permits to act on the AV-WALL-DT4oB DT4oB:

- Change the gain
- Change the source of outputs
- Play / Pause a paired Bluetooth device

3.1.1 Change the gain

Screen	LED Actives	Stream changed	Action on the button	Action
Out 1: Outdoor- Stage3 G: -3db	Gain On + 1 blinking	Out1 (XLR)	Turn left	Decrease the gain
			Turn right	Increase the gain
			Push	*Go to "Out1" source control
Out 2: Outdoor- Stage4 G: 0db	Gain On + 2 blinking	Out2 (XLR)	Turn left	Decrease the gain
			Turn right	Increase the gain
			Push	*Go to "Out2" source control
Out 3 †: Entrance Speaker G: +5db	Gain On + 3 blinking	Out3 L/R † (Stereo mini jack or Bluetooth)	Turn left	Decrease the gain
			Turn right	Increase the gain
			Push	**Go to "Out3 †" source control

Notices:

- The gain is highlighted when changing its value.
- The gain LED is "On" when acting on the gain.
- The stream's LED we are acting on is blinking.

* If button source control is enabled, otherwise go to next setting (gain control).

3.1.2 Change the source

Output changes (change the Dante patches of the device) can be perform with action on the button.

To use this feature a Dante patches configuration must be loaded on your device. See the following documentation to load a custom Dante patches configuration.

[https://www.auvitran.com/downloads/manual/AV-WALL-DT4oB Advanced Settings.pdf](https://www.auvitran.com/downloads/manual/AV-WALL-DT4oB%20Advanced%20Settings.pdf)

If device has no loaded Dante patches configuration the source change with the button control is disabled.

Screen	LED Actives	Stream changed	Action on the button	Action
Out 1: Outdoor- Stage3 G: -3db	Source On + 1 blinking	Out1 (XLR)	Turn left	Go to the next Dante device
			Turn right	Go to the previous Dante device
			Push	*Go to "Out2" gain control
Out 2: Outdoor- Stage4 G: 0db	Source On + 2 blinking	Out2 (XLR)	Turn left	Go to the next Dante device
			Turn right	Go to the previous Dante device
			Push	*Go to "Out Bluetooth" gain control
Out 3 †: Entrance Speaker G: +5db	Source On + 3 blinking	Out3 L/R (Mini jack or Bluetooth)	Turn left	Go to the next Dante device
			Turn right	Go to the previous Dante device
			Push	**Go to Bluetooth Control

* If button gain control is enabled.

**If Bluetooth Device Control is enabled.

If the labels characters number is inferior or equals to 7 the device switch automatically to a larger font as show below.



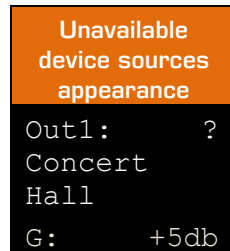
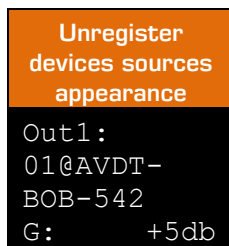
Other behavior and display configuration are also available see the following document to know more about it.

<https://www.auditran.com/downloads/manual/AV-WALL-DT4oB Advanced Settings.pdf>

3.1.2.1 Unavailable devices handling & Dante remote control.

If a source is not available on the network the user is notified after few seconds by a question mark on the output title.

- If the current source is changed remotely via Dante controller, there is 2 different case:
 - The source is already register as a preset, then its label is normally displayed.
 - The source isn't register as a label then the Dante channel and device currently connected are displayed.



3.1.3 Bluetooth Control

If an output Bluetooth device is paired (Bluetooth speakers, earphones) the user can set the pairing status by turning left or right the button.

Action on the button	Action
Turn left	Select the next Bluetooth menu action
Turn right	Select the previous Bluetooth menu action
Push	Valid the selected option

- When no Bluetooth device is connected the following action are available :

Screen	Action
Bluetooth Off No BT PAIRED Search	Search for Bluetooth device to be paired.
Bluetooth Off No BT Paired Next	Exit Bluetooth menu, go to next settings.

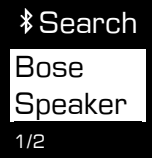
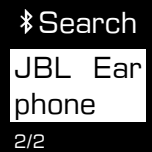
- When a Bluetooth device is connected the following action are available:

Screen	Action
Bluetooth On PHANTOM Speaker Next	Exit Bluetooth menu, go to next settings
Bluetooth On PHANTOM Speaker Search	Search for Bluetooth device to be paired, disconnect the current device.
Bluetooth On PHANTOM Speaker Unpair	Force disconnection of the Bluetooth devices
Bluetooth On PHANTOM Speaker Pause	Pause the audio Bluetooth stream.
Bluetooth Paused PHANTOM Speaker Play	Pause the audio Bluetooth stream.

3.1.3.1 Bluetooth device search & pairing

When "SEARCH" is chosen the Bluetooth discovery process begins.

Wait message is displayed with a countdown of 10s until a device is found. After the discovery the user can select a device to be paired in the list. The number of found devices and the current selected device is indicated under the name of the Bluetooth device.

Screen	Action on the button	Action
	Turn left	Go to the previous Bluetooth discovered device
	Turn right	Go to the next Bluetooth discovered device

The user has the option to not pair to Bluetooth device by selecting the item number 0 "Not Paired"

3.1.3.2 Bluetooth Unpair

To disconnect all the devices from Bluetooth module, select the "Unpair" option in the Bluetooth Menu. It may take few seconds before all connections close. See section ["Bluetooth" Menu](#) in AVS-Monitor for Bluetooth remote control.

3.1.3.3 Play / Pause Bluetooth Audio Stream

If the audio remote control is available on your remote Bluetooth device, you can play / pause audio the stream via AVS-Monitor or the push button control. See section ["Bluetooth" Menu](#) in AVS-Monitor for Bluetooth remote control.

3.2 Configuration mode

The Configuration mode is activated by pressing the push-button for at least 5s.

When in configuration mode, the user can set these parameters in this order:

- [Screen brightness](#)
- [LEDs brightness](#)

Note:

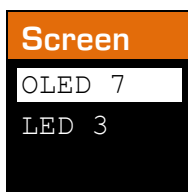
- Each parameter access can be deactivated.
- If no access to any of those parameters is given, the configuration menu is bypassed, and device remains in control mode.
- Others configuration options are available when operating in advanced settings mode. See the following documentation:

[https://www.auvitran.com/downloads/manual/AV-WALL-DT4oB Advanced Settings.pdf](https://www.auvitran.com/downloads/manual/AV-WALL-DT4oB%20Advanced%20Settings.pdf)

3.2.1 Screen brightness

Brightness change are directly visible on the screen. Adjust range goes from 0 to 15.

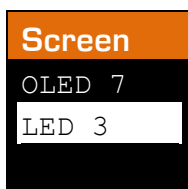
- Turn left to decrease the screen's brightness
- Turn right to increase the screen's brightness.
- Press shortly the button to set the next option: LEDs brightness.
- Press the button for 5s to exit the configuration mode and return to control mode



3.2.2 LEDs brightness

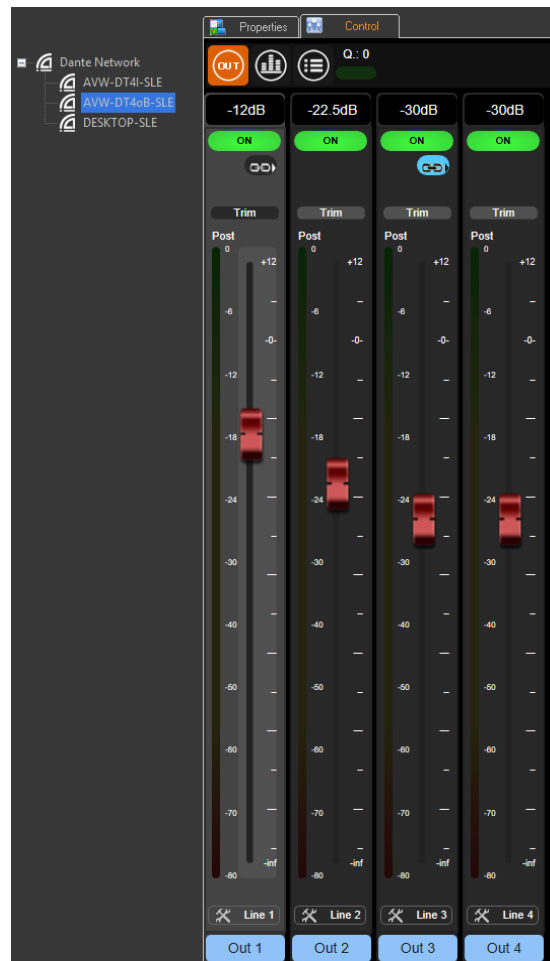
During this setting all LEDs are activated:

- Turn left for decreasing the brightness
- Turn right to increase the brightness
- Press shortly the button to set the next option: Sources mapping modes.
- Press the button for 5s to exit the dimmer mode and return to control mode



4 AV-WALL-DT4oB control using AVS-Monitor

4.1 “Out” Interface

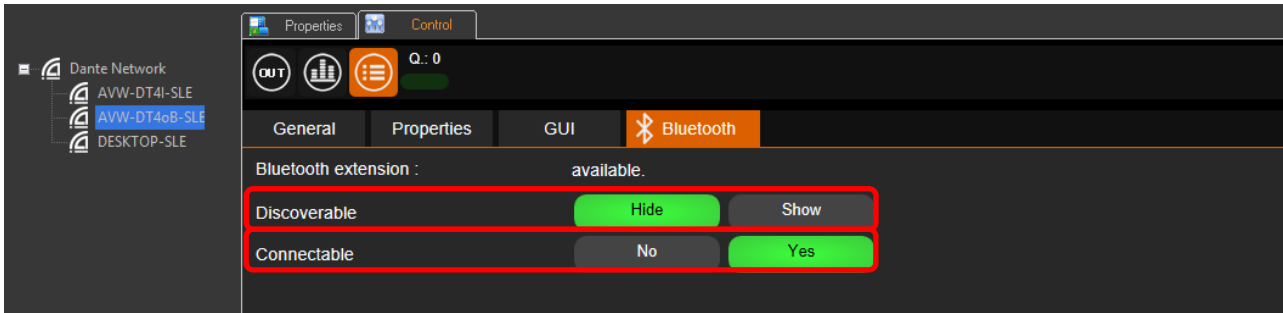


ON **OFF** button unmutes when Green or mutes (i.e. when Black) the corresponding input.

↔ **↔** button links when blue or not when black the 2 consecutive inputs.

4.2 “Bluetooth” Menu

When no device is connected the menu shown is the following:



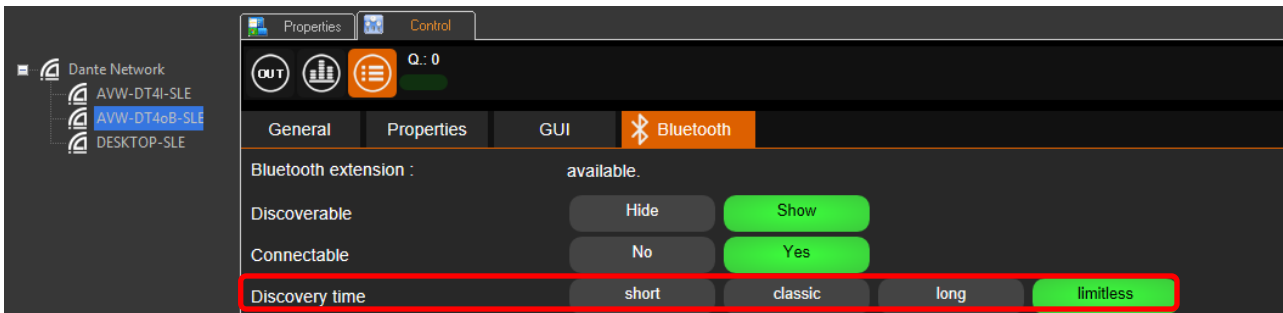
1. Discoverable

1.1. Set whether the AV-Wall is visible to the other Bluetooth devices.

2. Connectable

1.2. Set whether the AV-Wall can be connected to other Bluetooth devices.

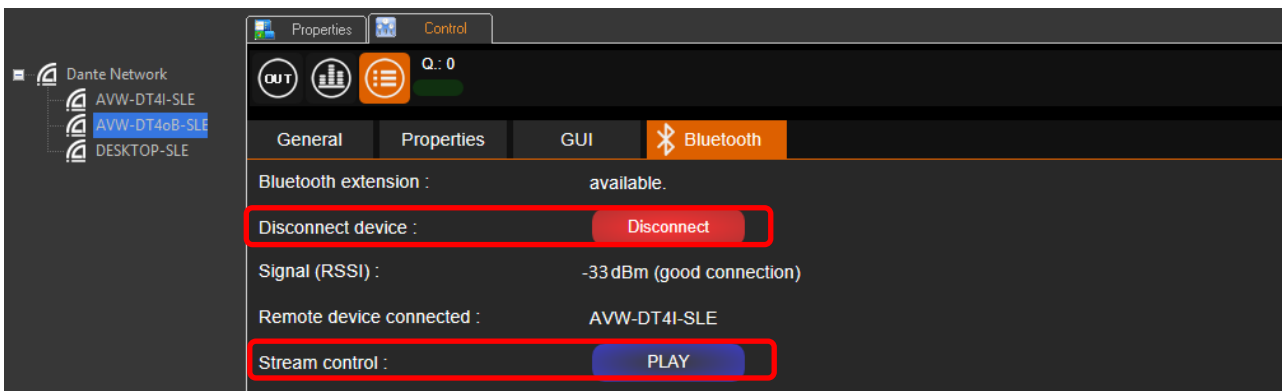
If the AV-Wall is visible to the other devices, the user can set the time span of visibility of the device.



3. Discovery time

3.1. Set the time span while the AV-Wall is visible for the others Bluetooth devices, when not connected.

If the AV-Wall is connected to a Bluetooth audio receiver the menu shown is the following;



4. Disconnect device

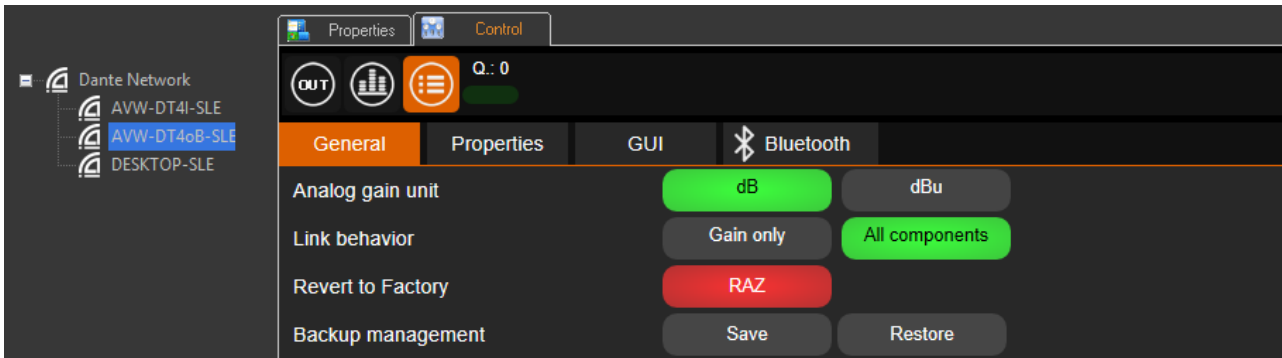
4.1. Close the Bluetooth connection with the remote device connected.

5. Stream Control

5.1. Play or pause the audio stream on Bluetooth link.

4.3 “General” menu

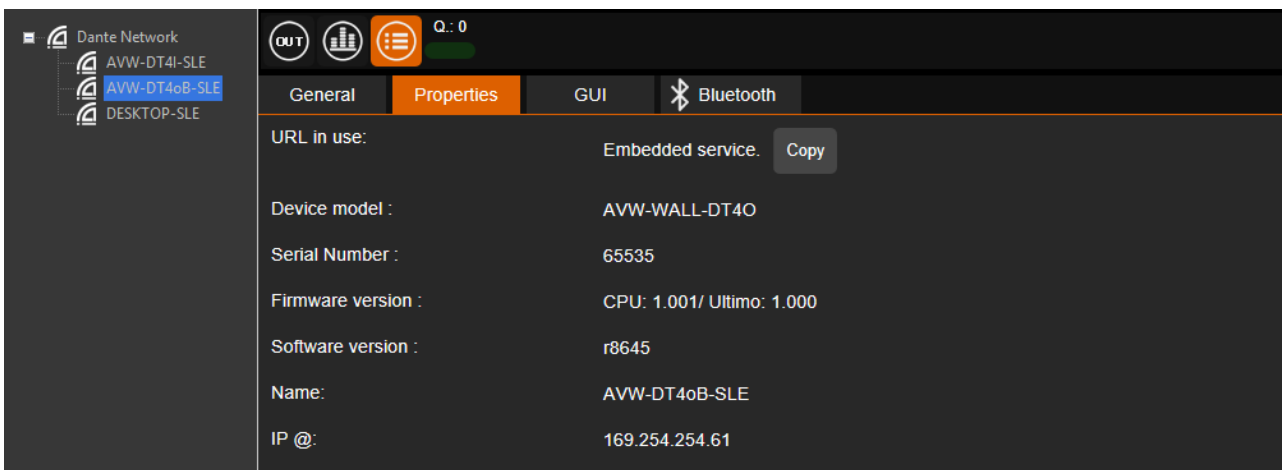
This menu enables to change the behavior of the interface



1. **Analog gain unit** defines the unit of gain
 - 1.1. Can be select in dB or dBu
2. **Link Behavior** defines which parameter are linked when the link button is set in the “In” interface
 - 2.1. Only Gain when “Gain Only” is Green (i.e. selected)
 - 2.2. All parameters are linked when “All components” is Green (i.e. selected)
3. **Revert to factory:**
 - 3.1. Revert all parameters to factory settings
4. **Backup management**
 - 4.1. Save the current memory configuration of the AW WALL DT4O device.
 - 4.2. Reload a previously saved memory configuration of the AW WALL DT4O device.

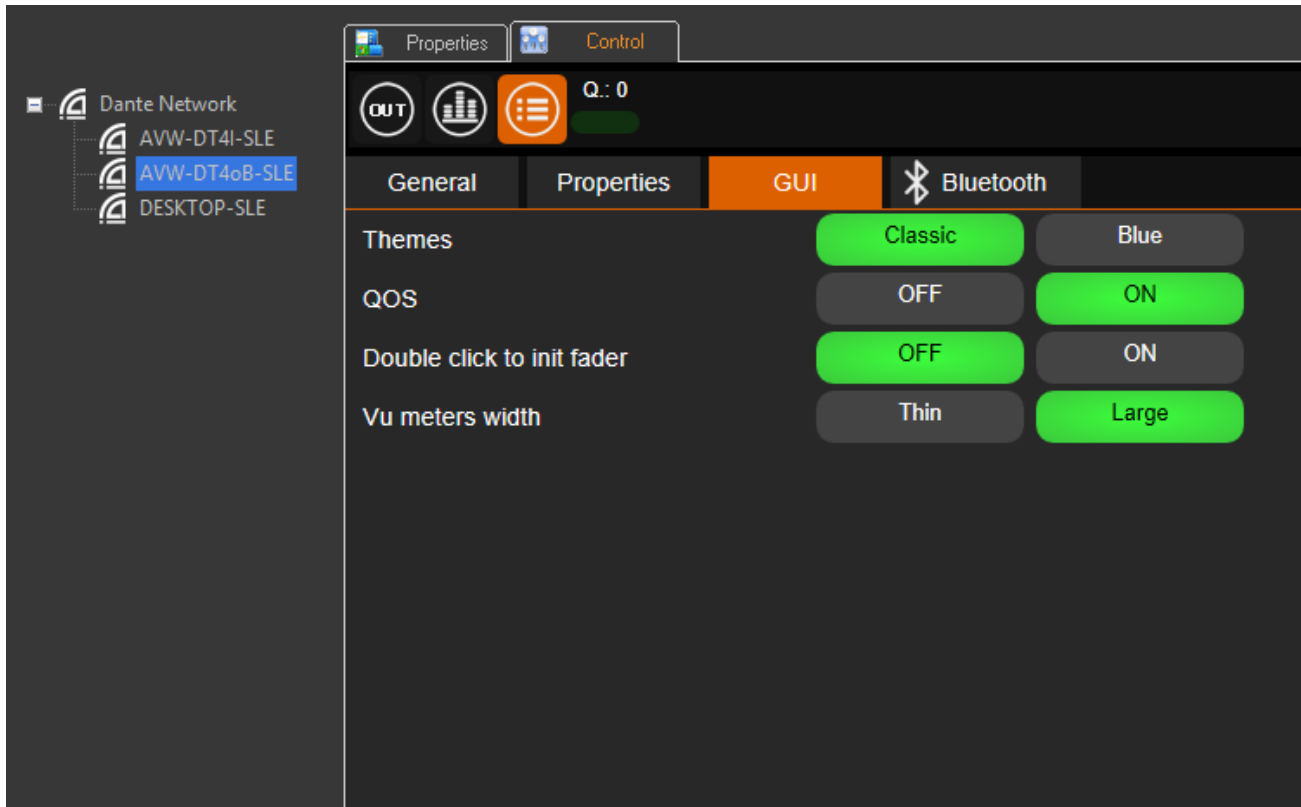
4.4 “Properties” menu

This menu shows information on the selected AV-WALL



4.5 “GUI” menu

This menu gives access to GUI parameters for the AV-WALL



1. **Themes** change the color set of AVS-Monitor.
2. **Slice Name position** change the position of the channel name.
3. **QOS** when ON (Green) displays information of network and interface speed/interactivity:
4. **Double click to init** fader when ON (Green) enables to set the gain to 0dB when a double click is done the fader
5. **Vu meter width** defines the thin of the vu-meter