

AVD-MB Overview

AVD-MB is a motherboard for the Auvitrans AVDM-ES OEM card with the AVD-ES 85mm x 100mm form factor.

The AVD-MB plus AVDM-ES bundle can be used for ES100 replacement of the legacy AVD-ES card or to design an EtherSound ES100 system or to quickly prototype an AVDM-ES product.

The AVD-MB Motherboard is available with three types of connector: Neutrik EtherCon or Standard RJ45 or HE13 connectors to answer any kind of AVD-ES replacement.

An AVD-MB + AVDM-ES bundle include full network or local remote control management of channel assignment and provides GPIO, Host Port and Serial interfaces to manage directly internal parameters and external devices for professional audio products.

Key Features

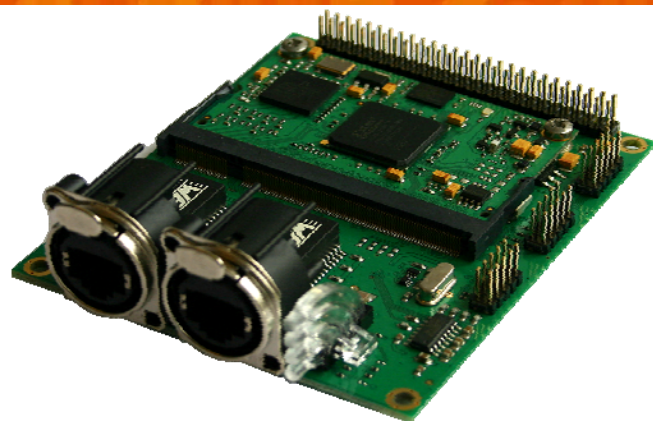
- AVDM-ES Motherboard
- AVD-ES Form Factor and Connectors compatibility
- 3 kind of connectors (EtherCon™, RJ45, HE13)
- Dual Magnet for ES100, ESGiga and AES50 compatibility.
- Onboard LED support for EtherSound In and Out Port.
- 5V power supply request

Mechanical Specifications

85mm x 100mm x 32mm (3.346" x 3.937" x 1.260") with XLR-EtherCon Neutrik RJ45 compatible connector

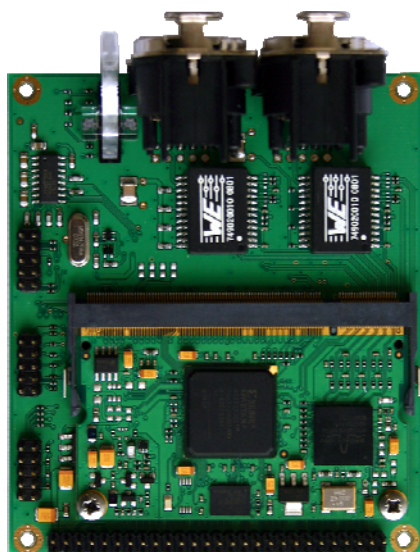
85mm x 100mm x 17mm (3.346" x 3.937" x 0.669") with Standard RJ45 connector

85mm x 100mm x 14mm (3.346" x 3.937" x 0.551") with HE13 connector for external network connector

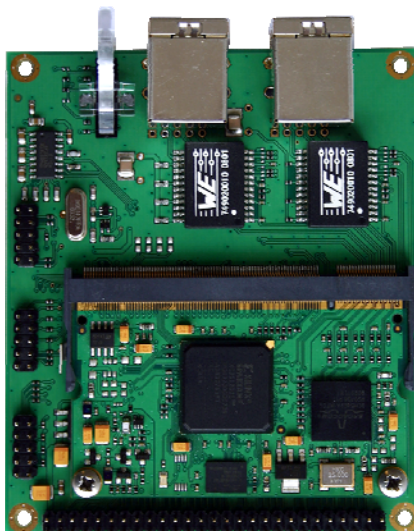


Applications

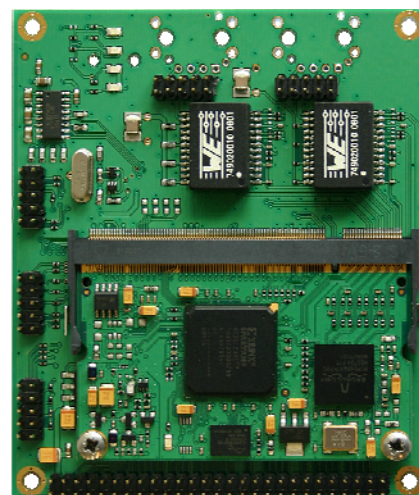
- Product for fixed installation with high quality Audio distribution, paging and zone management:
 - ◆ Stadium, Opera, theatre, museum and arts centre
 - ◆ Shopping malls and arcades
 - ◆ Theme parks and resorts
 - ◆ Public Address: touring and fixed sound reinforcement
 - ◆ Broadcasting
 - ◆ Office blocks, corporate boardrooms and buildings PA
 - ◆ Government administrative offices
 - ◆ Exhibition and conference Centres
 - ◆ Schools, colleges and universities
- Product for Transportation public address
 - ◆ Train and bus stations terminals
 - ◆ Airport facilities and audio distribution
 - ◆ Cruise Ships paging including onboard entertainment and leisure centre audio facilities
- Product for Distribution, routing and control of audio for live and touring installation
 - ◆ Live broadcast PA/announcement
 - ◆ Live entertainment and concerts
 - ◆ TV and Radio Outside Broadcast
 - ◆ Electro acoustic music productions



Neutrik Version (ref: AVD-MB)



RJ45 Version (ref: AVD-MB-LE)



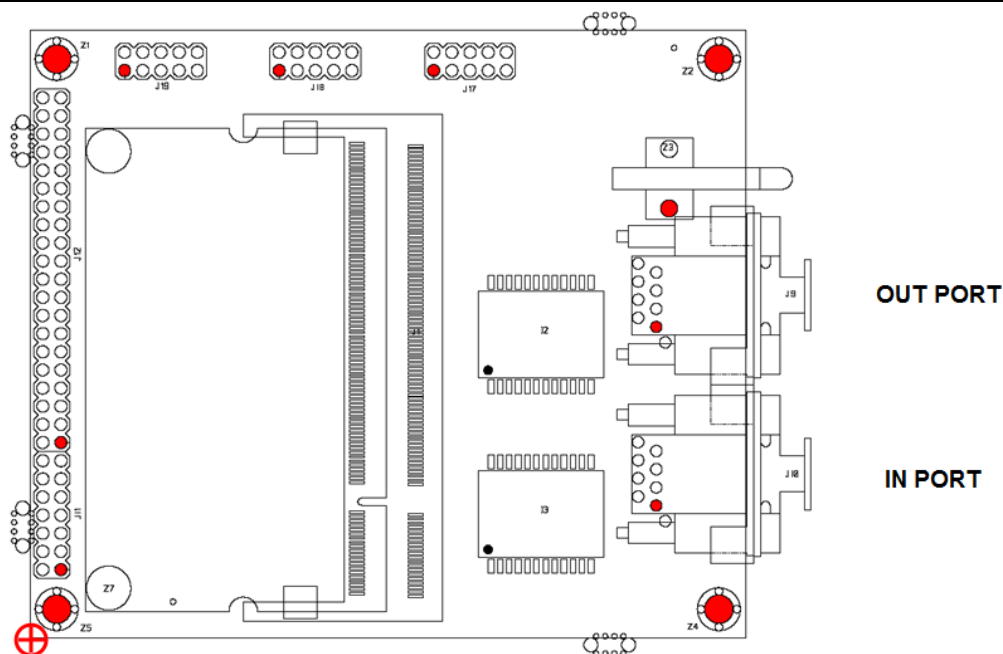
HE13 Version (ref: AVD-MB-LC)

Technical Specifications

General

Size	85 mm x 100 mm x 17 mm (RJ45) or 85 mm x 100 mm x 32 mm (XLR EtherCon)
Power Consumption with AVDM-ES	<4 Watts
Power Supply	+5 V, GND
Storage: Temp/Humidity (non-condensing)	- 5°C to 70°C / 0% to 95%
Operating: Temp/Humidity (non-condensing)	0 °C to 50°C / 5% to 90%
Connectors (version standard)	2 RJ45/XLR female connectors (Links from/to), 8 GPIO, 1 Host Port, from 2 up to 16 SSI or i4s or i8s I/Os, +5V, GND, 1 DB9 for RS-232/485(Shared with Host Port)

PACKAGE DRAWING & DIMENSIONS



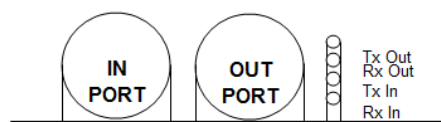
The board size is 100mm length by 85mm wide. PCB is 1,6mm thick.

All connectors are standard HE13 connectors (2,54mm)

Network Connectors are RJ45 NE8FBH Neutrik Connectors.

4 Network LEDs are available but no Lightpipe is populated

	X	Y
Board bottom-left corner	0,00 mm	0,00 mm
Board top-right corner	100,00 mm	85,00 mm
J11.1	4,34 mm	9,54 mm
J12.1	4,34 mm	27,32 mm
J19.1	13,22 mm	79,39 mm
J18.1	34,81 mm	79,39 mm
J17.1	56,41 mm	79,39 mm
In Port Connector Pin 1	87,500 mm	18,500 mm
Out Port Connector Pin 1	87,500 mm	43,500 mm
Light Pipe bottom hole	89,300 mm	60,100 mm
bottom-left fixation drilling	3,75 mm	4,00 mm
top-left fixation drilling	3,75 mm	81,00 mm
top-right fixation drilling	96,25 mm	81,00 mm
bottom-right fixation drilling	96,25 mm	4,00 mm



Version 1.00 April09

Part numbers

AVD-MB

AVD-MB card with 2 Neutrik EtherCon (XLR RJ45) connectors

AVD-MB-NC

AVD-MB card with 2 male HE13 connectors to enable external mounting

AVD-MB-LE

AVD-MB card with 2 conventional RJ45 connectors