

AxC-DANTE Overview

Just as every AxC card within the Audio ToolBox range, the AxC-DANTE can equally be used in AVBx3 or AVBx7 platforms.

Using one slot of either ToolBox, the AxC-DANTE allows to control Dante networks, but also to bridge them with other network configurations.

Key Features

- Using only one Audio ToolBox slot, the AxC-DANTE can be used either with AVBx3 or AVBx7 platforms
- 64 Dante™ inputs and 64 Dante™ outputs
- One integrated switch featuring 4x gigabit ports
- Remote management with AVS-Monitor software
- Two EtherCon connectors (Primary/Secondary) for connection in switch or redundant mode
- Two Ethernet RJ45 connectors (port 3 and port 4) to be used as integrated Gigabit switch ports

Audio ToolBox Platform Overview

Smart, expandable and sustainable: meet AuviTran's versatile and flexible platforms bringing convergence among network technologies and audio interfaces.

With two 19" rack chassis AVBx3 and AVBx7 both available in StageBox or Installation modes, plus 14 interface cards, build the configuration you need.

AVBx3 as Installation mode




AVBx7 as StageBox mode



Mechanical Specifications

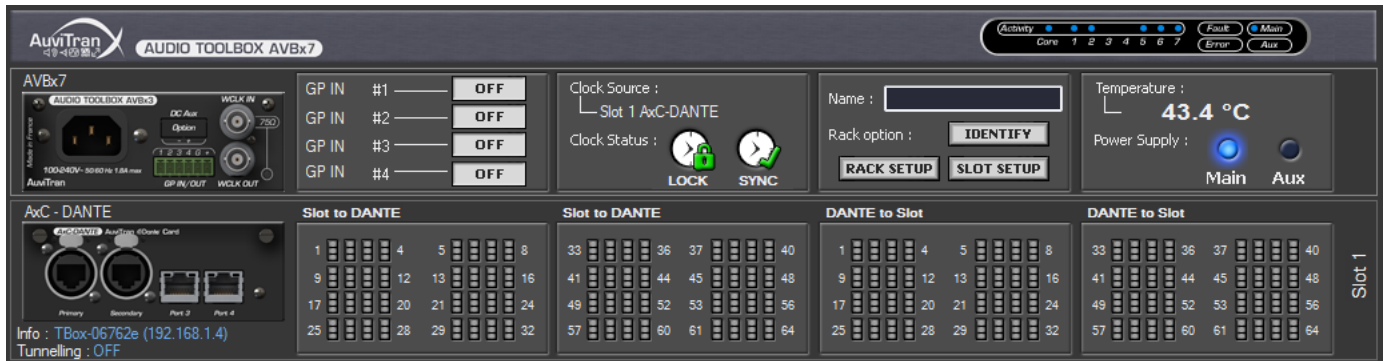
200 x 100 x 40 mm: AuviTran Audio ToolBox platform AxC card format

AxC-DANTE Applications

 Combined with other AuviTran Audio ToolBox cards, the AxC-DANTE card opens exciting possibilities to the professional audio systems:

- Can be transformed into a flexible analog StageBox, when combined with a ToolBox (AVBx3 or AVBx7), AxC-AX4M high class mic/line preamps cards and AxC-AX4O analog output card.
- Up to 24 analog mic inputs can be monitored directly from a Yamaha Dante console, just as RIO™ Stagebox.
- Dante bridges in combination with any other network AxC card such as Dante-MADI, Dante-Cobranet, Dante-EtherSound bridges, thus smartly mixing connectivity.
- Can work as a Virtual Soundcard with any standard ASIO, WDM or Core Audio interface.

AVS-Monitor Software control page



Technical Specifications

AxC-DANTE: Dante card for the AuviTran Audio ToolBox platform

| | |
|--------------------------|---|
| Size | 200 mm x 100 mm x 40 mm – Format AuviTran Audio ToolBox platform cards |
| Power Supply | +12V / +3.3V - Through AuviTran Audio ToolBox backplane |
| Storage: Temp/Humidity | - 5°C to 70°C / 0% to 95% (non-condensing) |
| Operating: Temp/Humidity | 0 °C to 50°C / 5% to 90% (non-condensing) |
| Connectors | 2 x Neutrik EtherCon RJ45-XLR female connectors 2 x RJ45 connectors |
| Dante Operation modes | Switch – Integrated Gigabit switch Redundant with Primary and Secondary ports, replicated on ports 3 and 4 |
| Audio Outputs | Up to 64 channels |
| Audio inputs | Up to 64 channels |
| HA remote modes | Yamaha Rio CL console / Audinate MY16AUD |
| Sample format | 24/32 bits |
| Sample rate | 44.1 kHz / 48 kHz / 88.2 kHz / 96 kHz |
| Synchronization | Automatic from Dante network |

Control and monitoring Environment

| | |
|-----------------------------------|---|
| AVS-Monitor | AVS-Monitor enables to remotely set, control and monitor an EtherSound network and provides enhanced control pages to manage the specific parameters of cards inserted in the different slots |
| Audinate Dante Controller | For audio patch of any Dante device, and additional features: multicast/unicast, redundant mode or switch mode |
| Audinate Dante Virtual Sound card | The optional Dante Virtual soundcard software allows your PC/Mac to connect to a Dante audio network. Note: a license is required to use this feature – please refer to Audinate’s website for more information |

V2-062017

Part number

AxC-DANTE Dante™ card for AuviTran Audio ToolBox