

AVCM2-MB Overview

AVCM2-MB is a motherboard for the AuviTran AVDM-ES OEM card with the CobraNet™ CM2 form factor.

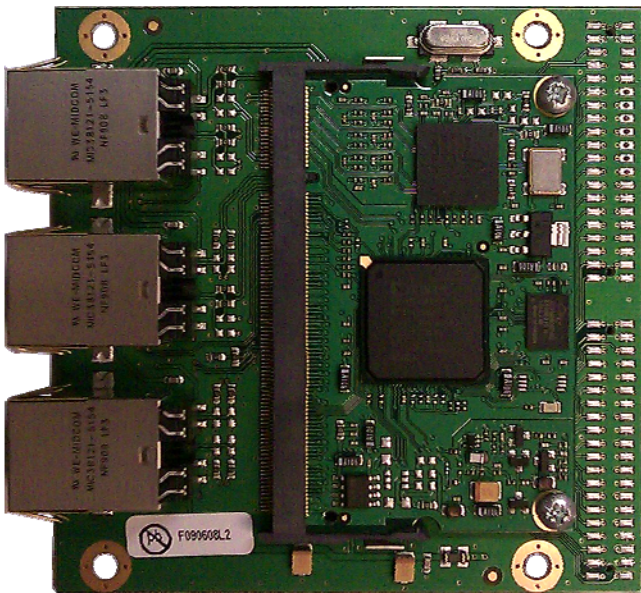
The AVCM2-MB+AVDM-ES bundle can be used for ES100 replacement of the legacy COBRANET™ CM2 card or to design an EtherSound ES100 system or to quickly prototype an AVDM-ES product.

The AVCM2-MB Motherboard is available with three types of connector: Neutrik EtherCon or Standard RJ45 or HE13 connectors to answer any kind of COBRANET™ CM2 replacement.

An AVCM2-MB + AVDM-ES bundle include full network or local remote control management of channel assignment and provides GPIO, Host Port to manage directly internal parameters and external devices for professional audio products.

Mechanical Specifications

The AVCM-MB module is 88.9mm x 88.9mm (3.5"x3.5") with four mounting holes.



Chassis mounting is available via an optional mounting bracket and either 2 or 3 RJ-45 connector configurations. The two 2mm 40 pin connectors mounted are available either on the top (component side) or on the bottom to Maximize the flexibility in space limited applications.

Key Features

- AVDM-ES Motherboard with full ES100 features
- Mechanically and electrically compatible with CobraNet™ CM-2 modules for legacy systems (requires host firmware modifications)
- Dual Magnet for ES100, ESGiga and AES50 compatibility.
- Onboard LED support for EtherSound In, Out and 3rd Port.

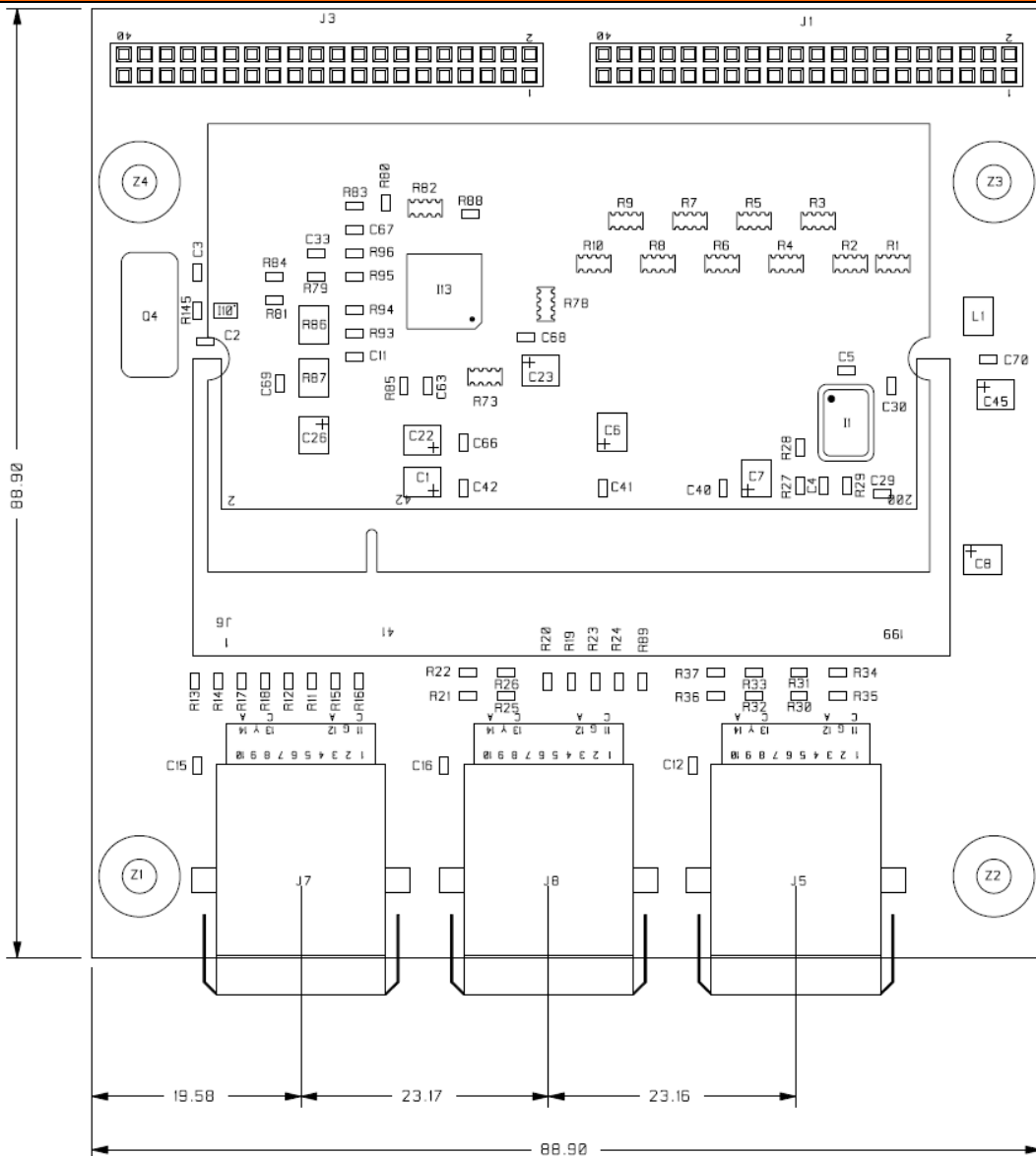
Applications

- Product for fixed installation with high quality Audio distribution, paging and zone management:
 - ◆ Stadium, Opera, theatre and museum centre
 - ◆ Shopping malls and arcades
 - ◆ Theme parks and resorts
 - ◆ Public Address: touring and fixed sound reinforcement
 - ◆ Broadcasting
 - ◆ Office blocks, corporate boardrooms and buildings PA
 - ◆ Government administrative offices
 - ◆ Exhibition and conference Centres
- Product for Transportation public address
 - ◆ Train and bus stations terminals
 - ◆ Airport facilities and audio distribution
 - ◆ Cruise Ships paging including onboard entertainment and leisure centre audio facilities
- Product for Distribution, routing and control of audio for live and touring installation
 - ◆ Live broadcast PA/announcement
 - ◆ Live entertainment and concerts
 - ◆ TV and Radio Outside Broadcast
 - ◆ Electro acoustic music productions

Technical Specifications

General	
Size	88.9 mm x 88.9 mm ((3.5"x3.5") with four mounting holes
Power Consumption with AVDM-ES	<4 Watts
Power Supply	+3.3 V, GND
Storage: Temp/Humidity (non-condensing)	- 5°C to 70°C / 0% to 95%
Operating: Temp/Humidity (non-condensing)	0°C to 50°C / 5% to 90%
Connectors (standard version)	3 RJ45 female connectors (In, Out, 3rd), 40 pins connectors electrically and mechanically compatible with CM-2 modules

PACKAGE DRAWING & DIMENSIONS



Version 1.00 May 2009

Part numbers

- AVCM2-MB/2B** AVCM2-MB card with 2 RJ45 connectors and the 2 mm 40 pin CM2 connectors on Bottom
- AVCM2-MB/2T** AVCM2-MB card with 2 RJ45 connectors and the 2 mm 40 pin CM2 connectors on Top
- AVCM2-MB/3B** AVCM2-MB card with 3 RJ45 connectors and the 2 mm 40 pin CM2 connectors on Bottom
- AVCM2-MB/3T** AVCM2-MB card with 3 RJ45 connectors and the 2 mm 40 pin CM2 connectors on Top